

# Searching for the Genetic Roots of Psychiatric Disorders

Dr. Chunyu Liu

Scientia



# SEARCHING FOR THE GENETIC ROOTS OF PSYCHIATRIC DISORDERS

Decades of research indicate that mental health conditions and psychiatric disorders have a strong genetic basis. Expanding our understanding of mental health by encompassing a more systemic approach may help us improve both diagnosis and treatment.

**Dr. Chunyu Liu** and his team from SUNY Upstate Medical University are using big data to discover the genetic and molecular changes in the brain that occur with different psychiatric disorders. His studies are helping us understand the diversity of human behaviour and develop new methods to treat mental health conditions.

---

## Approaching the Complicated Mind with a Vision of Systems

Psychiatric disorders are as elusive to characterise as they are difficult to treat. As we should expect from conditions arising in the brain – the most complex organ of the body – the aetiology of mental health disorders remains poorly understood despite significant attempts to identify the root causes. The consensus is that a combination of environmental and genetic factors increases the likelihood of mental illness, but pinpointing universal causative mechanisms has remained difficult due to the unique combination of factors pertaining to each and every individual.

Research into molecular genetics has advanced significantly in the last ten years and the rapid evolution of available technologies has been a major driving force behind this. Such technologies include genome-wide association studies (GWAS), whole-genome and whole-exome sequencing techniques, and all forms of -omics which aim to associate a specific gene (or gene variant) with a given condition.

Dr. Chunyu Liu and his team from Upstate Medical University are using these tools to explore the genetic underpinnings of human behaviour and how gene variants can be linked to mental illnesses including schizophrenia, bipolar disorder, autism spectrum disorder, attention deficit hyperactivity disorder, and others.

‘I am interested in learning what determines human behaviour, including that of abnormality and so-called “mental illness” with the goal to develop effective methods for prognosis, diagnosis and treatment to reduce the associated suffering’ explains Dr. Liu. His work is revolutionising what we know about the genetic architecture of major psychiatric disorders.

Dr. Liu wants to make it clear that brain research should focus on biological networks and systems, rather than single genes or factors. Known as systems biology, this approach takes into account all the components which coexist in our bodies and interact with each other. Taking a more holistic view can help link together the environmental and genetic factors and



their interactions that may increase the risk of psychiatric problems.

## Searching for the Genetic Codes of Psychiatric Disorders

Searching for genes associated with a condition was once a time-consuming and expensive process. But now, whole genomes can be characterised and uploaded into a database available for researchers all over the world to access and explore.

As noted earlier, GWAS can identify specific variations of a gene which might be associated with a certain condition. These variants, known as single-

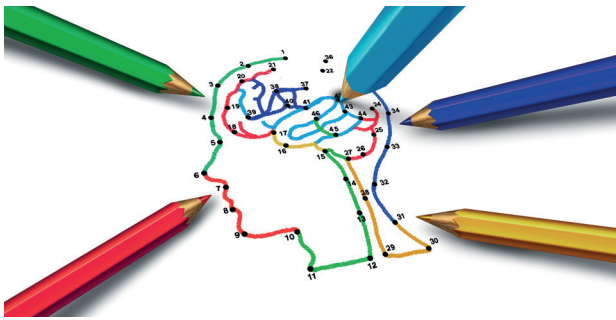


Dr. Liu emphasises that SNPs account for only a small percentage of the genetic risk for these highly complex disorders, representing only the very tip of the iceberg. Indeed, GWAS can identify thousands of potential genes involved in a single psychiatric condition. These genes connect to the other thousands of genes with even weaker effects that are more difficult to detect. Unravelling the different roles of 'core' genes from the 'peripheral' genes,

When studying the genetic associations of a condition, it is important to remember that only 1% of the human genome is expressed into proteins. The transcriptome, on the other hand, encompasses all the genes which are transcribed from DNA to RNA. A subset of RNA, and more specifically, messenger RNA (mRNA), is the intermediary between DNA and protein. mRNA can be used as a quantitative measure to find out where certain genes are expressed. For example, if a gene's RNA is expressed highly in the brain but not elsewhere, or if the gene expressed highly in specific developmental or ageing stages, we can deduce that this gene and its protein plays a role in brain function. Moreover, this quantitative

Genes and their encoded proteins do not represent the entirety of genetic influence. A level up from this is that of epigenetic factors which alter the way genes can be expressed. These include DNA methylation, histone modifications, and non-coding RNA. Epigenetic changes are heritable and can alter the location, intensity, and timing of a gene's expression. To date, epigenetic factors have been important sources of biomarkers of disease diagnosis and treatment.





Using genetic and epigenetic technologies, Dr. Liu demonstrated that genetic differences can affect individual differences in DNA methylation. He pioneered efforts mapping genetic regulators of gene expression in the human brain, and in interpreting the results of genetic studies. Through collaboration with other researchers, concerted molecular changes in patients' brains have been uncovered.

Critically, the researchers found that different disorders have shared disordered changes. These changes are concentrated in specific brain cell types (neurons, microglia, and astrocytes), biological pathways like synaptic functions, mitochondria, and the immune response. Some of these changes are genetically determined, like those related to the neuronal functions of oligodendrocytes and astrocytes. The others might be affected by environmental factors like the immune response, mitochondria, and the blood-brain barrier.

### Forging New Paths

Dr. Liu is endlessly bringing new tools, datasets, and theoretical frameworks to his research to deepen the mechanistic understanding of disease risk, and to ensure the reliability of research results. Examples include the study of cellular models of risk genes, sex and racial background of diseases. These are not only important for understanding disease mechanisms but also critical for addressing social (in)justice related to health.

Dr. Liu and his team are joining with other research laboratories using cellular models to study the functions of hundreds of risk genes identified by large genetic studies. They have now confirmed that some risk genes can regulate expression of other genes, influence cell proliferation and differentiation in the brain and the electrophysiology of neurons. This type of research will be critical for revealing the underlying mechanism of psychiatric disorders.

Recent work by Dr. Liu and his team has revealed the complicated nature of sex-biased risk in psychiatric disorders, such as an up to three-fold increase in the likelihood for females to develop major depression compared to males. His research points to the role of epigenetic DNA methylation and the regulatory networks which control this, where sex differences exist in the pattern of DNA methylation and perhaps alter the subsequent gene transcription and function. This was found to be particularly prominent in genes associated

with psychiatric disorders and neuronal signalling pathways, and may pave the way for studies that may lead us to refined treatment for patients of different sexes.

To date, the majority of current studies have been conducted on European descents. Dr. Liu is interested in addressing this diversity issue while serving as the first chair of the Global Diversity Committee of the International Society of Psychiatric Genetics for four years. Currently, his team is actively studying the gene expression regulation in brains of diverse population backgrounds. This is a critical gap that needs to be filled to make genetic research beneficial to all human beings without disparity.

We can clearly see how interesting new lines of research are bringing together concepts from multiple fields of study. As techniques and technologies improve, we can expect to see even further advancements in our understanding of genetics in relation to psychiatry, and compelling leads from GWAS have even suggested links between predisposition to psychiatric disorders and physical traits. Such research is providing a transformative understanding of the pathology of psychiatric disorders.

In this regard, Dr. Liu believes in big data. He believes that big data integrating factors including biology, psychology and the social environment will offer a solution to understanding highly challenging psychiatric disorders. Despite the well-accepted dominant biopsychosocial model in clinical practice, there is still a lot to be done in basic research to integrate psychological and social factors with molecular genetics. Such molecular changes and genetic factors relating to psychological stress and treatment responses are examples of topics Dr. Liu's team is now exploring.

Reproducibility of findings is the most important problem to be addressed in the research field but it may be achieved with big data and replication. Dr. Liu strongly emphasises the importance of integration and reproducibility. He explains, 'We are getting closer and closer to the truth, to the heart of the problem. We are zooming in at unprecedented speed with the big data produced by us, by the collaborative research community through the world.'

By improving our understanding of how genes control molecular pathways disrupted in disease, we can better understand the underpinnings of human behaviour in health. Dr. Liu believes that as we gather more detailed information, we will be able to reshape the psychiatric diagnostic system and develop new treatments options to fit the individuality of each person. This will bring psychiatry into the world of precision medicine, where every patient can be treated with the optimal methods specific to that individual. 'We do not have a simple, crystal clear, answer yet' Dr. Liu explains, 'But we are getting there.'

# Meet the researcher



**Dr. Chunyu Liu**  
Institute for Human Performance  
Upstate University  
Syracuse  
New York, NY  
USA

Dr. Chunyu Liu graduated from Hunan Medical University, China, in 1998 with a PhD in Medical Genetics, before joining the faculty of the University of Chicago where he worked until 2011. In 2017, Dr. Liu began working at Upstate Medical University, Syracuse, New York, where he currently holds the posts of Professor of Psychiatry and Behavioural Sciences and Professor of Neuroscience and Psychology. Dr. Liu's research focuses on identifying molecular mechanisms of psychiatric disorders using genetic and genomic approaches to characterise the changes that occur in mental health conditions. He is a member of the American College of Neuropsychopharmacology, the American Society of Human Genetics, and the International Society of Psychiatric Genetics.

## CONTACT

**E:** [liuch@upstate.edu](mailto:liuch@upstate.edu)

**W:** <http://lbpg.upstate.edu/research.html>

## KEY COLLABORATORS

Elliot S. Gershon, University of Chicago  
Kevin P. White, Tempus  
Yue Wang, Virginia Polytechnic Institute and State University  
Guoqiang Yu, Virginia Polytechnic Institute and State University  
Junming Peng, St. Jude Children's Hospital  
Xusheng Wang, University of North Dakota  
Bingshan Li, Vanderbilt University  
Jeffrey Bishop, University of Minnesota  
Stella Dracheva, Mount Sinai  
Eric Gamazon, Vanderbilt University  
Chao Chen, Central South University  
Jingjing Zhao, Shaanxi Normal University  
Dalila Pinto, Mount Sinai  
Sidney Wang, The University of Texas

## FUNDING

National Institutes of Health  
National Alliance for Research on Schizophrenia & Depression  
Brain Research Foundation  
New York State Empire Innovation Program

## FURTHER READING

X Yan, D Rujia, W Kangli, et al., Sex-differential DNA methylation and associated regulation networks in human brain implicated in the sex-biased risks of psychiatric disorders, *Molecular Psychiatry*, 2019, doi:10.1038/s41380-019-0416-2

N Yuan, Y Chen, Y Xia, et al., Inflammation-related biomarkers in major psychiatric disorders: a cross-disorder assessment of reproducibility and specificity in 43 meta-analyse, *Translational Psychiatry*, 2019, 9, 233.

C Chen, Q Meng, Y Xia, et al., POU3F2 is a regulator of a gene coexpression network in brain tissue from patients with neuropsychiatric disorders, *Science Translational Medicine*, 2018, 10(472), eaat8178.

MJ Gandel, P Zhang, E Hadjimichael, et al., Transcriptome-wide isoform-level dysregulation in ASD, schizophrenia, and bipolar disorder, *Science*, 2018, 362(6420), eaat8127.

MJ Gandal, JR Haney, NN Parikshak, et al., Shared molecular neuropathology across major psychiatric disorders parallels polygenic overlap, *Science*, 2018, 359(6376), 693–697.

Q Meng, K Wang, T Brunetti, et al., The DGCR5 long noncoding RNA may regulate expression of several schizophrenia-related genes, *Science Translational Medicine*, 2018, 10(472), eaat6912.

C Liu, QTL Mapping of Molecular Traits for Studies of Human Complex Diseases, *Applied Computational Genomics: Springer Netherlands*, 2012, 61–82.

LK Davis, ER Gamazon, E Kistner-Griffin, et al., Loci nominally associated with autism from genome-wide analysis show enrichment of brain expression quantitative trait loci but not lymphoblastoid cell line expression quantitative trait loci, *Molecular Autism*, 2012, 3(1), 3.

